



Handheld Color Ultrasound Scanner

## Image Comparison Between 80-Element Probe and 128- Element Probe

### 1. Carotid scanning in Black and White

(Note: Adjust gain both at 55-60 to make the image quality to the best.)



80-Element

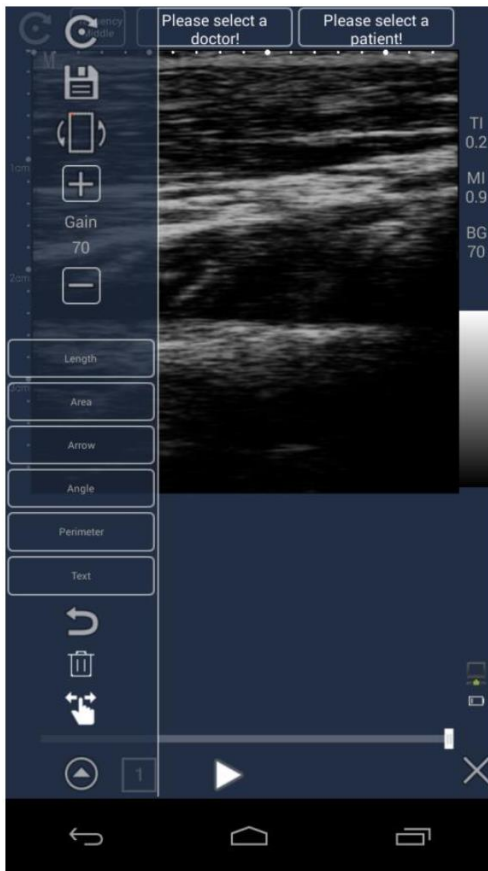


128-Element

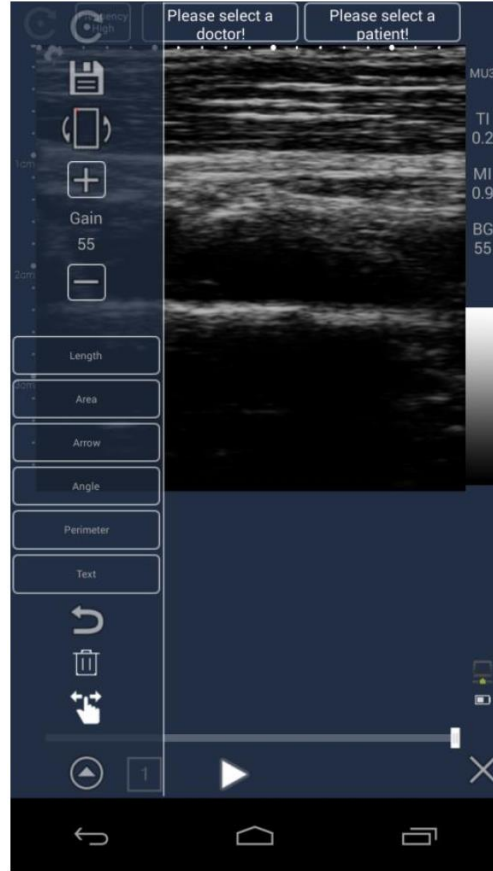
**Conclusion:** It can be seen that the image between 80-Element and 128-Element in black and white is almost the same.

2. Median nerve scanning in Black and White.

(Note: Adjust the gain of 80-Element to 70 and the gain of 128-Element to 55 to the best.)



80-Element

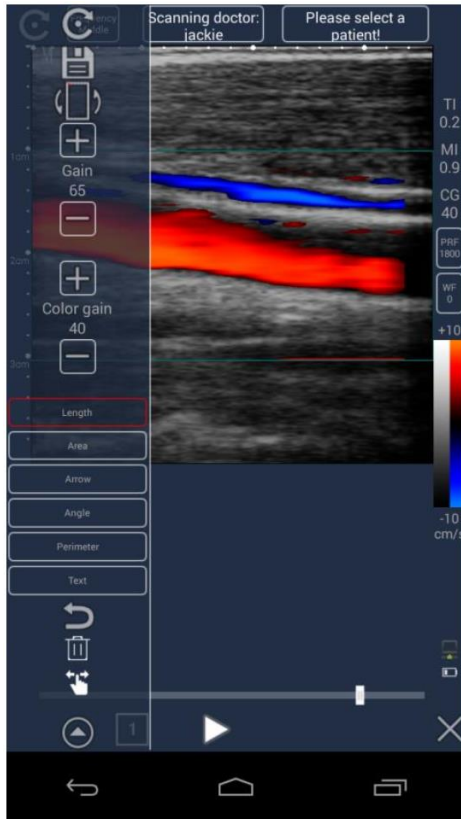


128-Element

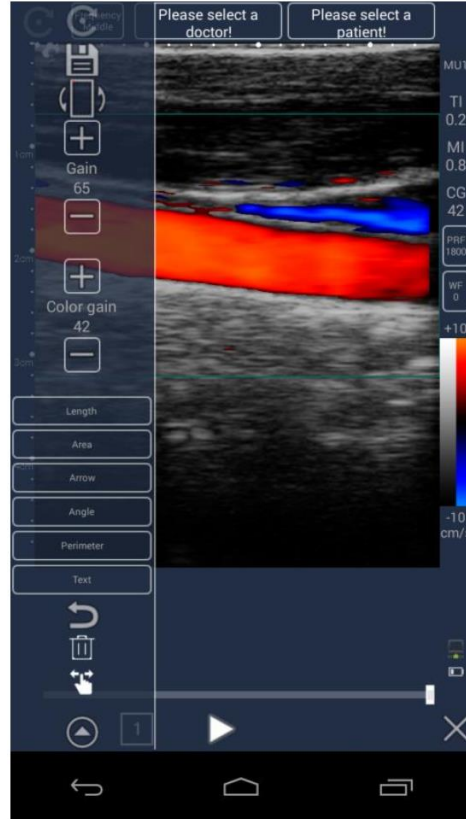
Conclusion: It can be seen that the image between 80-Element and 128-Element in black and white is almost the same.

3. Carotid scanning in Color Doppler

(Note: Adjust the gain both at 60-65, color gain both at 40-44, PRF both at 1200-1800 to make the best image quality to the best.)



80-Element

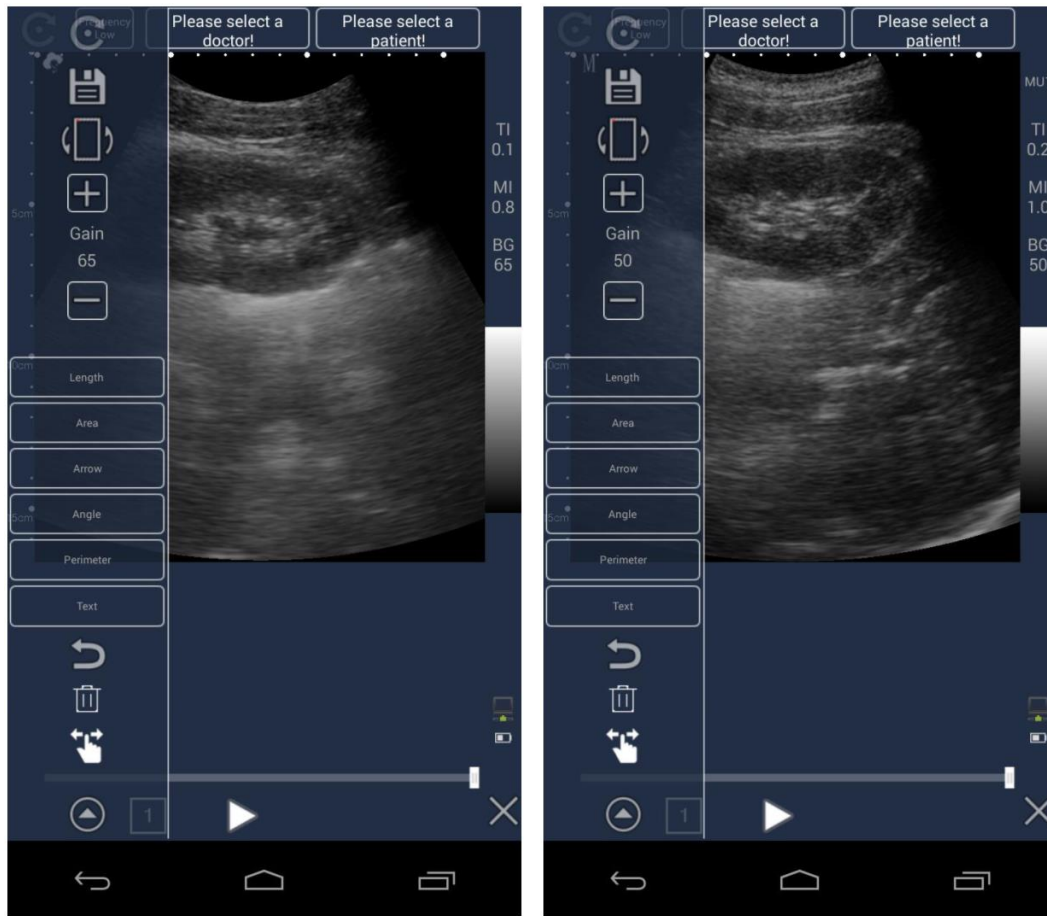


128-Element

Conclusion: It can be seen that the saturation of 128-Element is better than 80-Element.

4. Kidney scanning in Black and White

(Note: Adjust the gain of 80-Element to 65 and 128-Element to 50 to make the image to the best quality.)



80-Element

128-Element

**Conclusion: The smoothness of 128-Element is better than that of 80-Element.**

**END**